

Cottofaenza.



E: sales@qcg.co.nz | W: www.qcg.co.nz | P: 0800 525 585



Cottofaenza is a modern interpretation of the classic original red clay tiles, with an added mix of classy tones. The deep leathery brown reminiscences timeless Tuscan style while the black and white tones bring raw elegance in modern projects. Meticulous and precise design is underlined through the light gloss oxidation near some edges – typical of the original high temperature firing over an open fire in direct contact with this material.

PRODUCT TYPE: Glazed Porcelain Stoneware

COLOURS: See colour options overleaf

SIZES⁽¹⁾: 450x900

SURFACES: Natural Matt

EDGES: Rectified

USAGE: Floors and Walls

TECHNICAL INFO: See overleaf

VARIATION⁽²⁾: V3

WARRANTY⁽³⁾: 15 Years

ORIGIN: Italy

(1) Sizes are nominal and may include a grout joint. (2) Variation is an inherent property of tiles and stone. (3) If further details are required regarding our warranty or terms please contact our team on sales@qcg.co.nz or 0800 525 585

Cottofaenza.

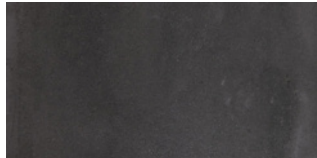


E: sales@qcg.co.nz | W: www.qcg.co.nz | P: 0800 525 585

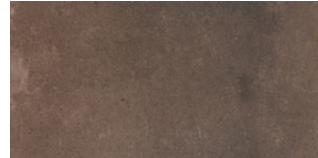
COLOURS:



Bianco

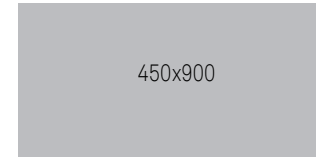


Nero



Terra

SIZES:



450x900

TECHNICAL CHARACTERISTICS	STANDARD	VALUE
---------------------------	----------	-------

Compliant with standards EN 14411 annex G group Bla. Compliant with standards ISO 13006 annex G group Bla.

Water absorption	EN ISO 10545-3	<0.1%
Frost Resistance	EN ISO 10545-12	✓
Chemical resistance	EN ISO 10545-13	✓
Size variation	EN ISO 10545-2	+/-0.1%
Thickness	-	10mm
Hardness (MOHS)	EN 101	4
Slip resistance	AS/NZS 4586:2013	-
Breaking Strength	EN ISO 10545-4	-
Faces	-	-